

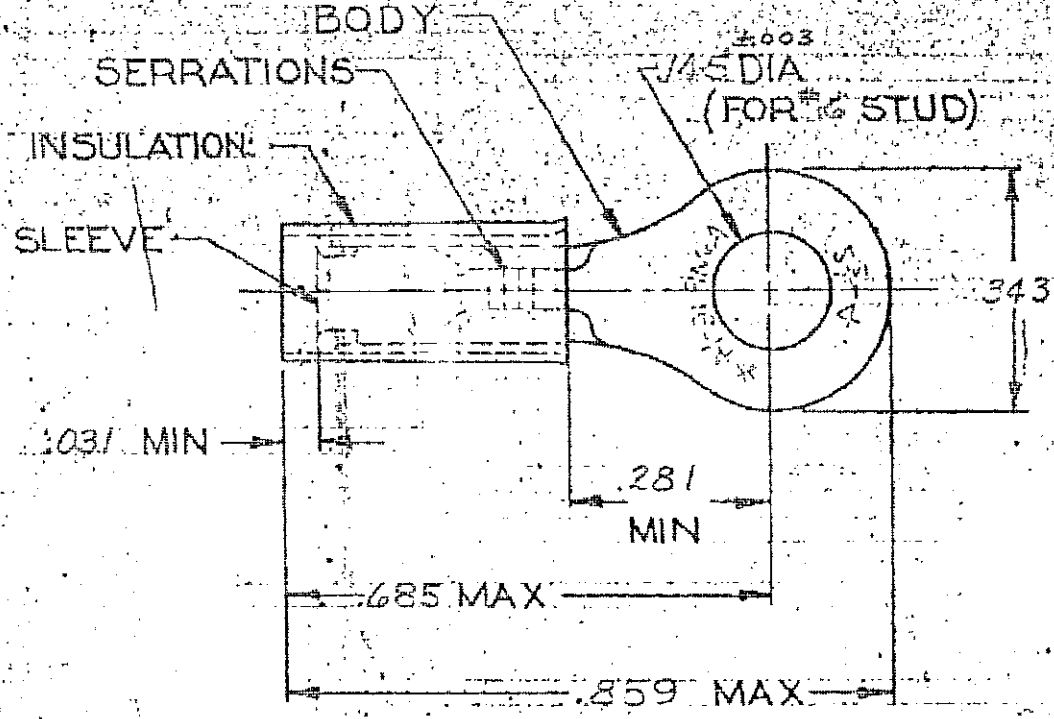
DRAWING MADE IN AMERICAN PROJECTION

LOC 6 PART DIST 14 2

© 1957 BY AMP INCORPORATED, ALL RIGHTS RESERVED. AMP PRODUCTS COVERED BY PATENTS AND/OR PATENTS PENDING.

REVISIONS

LTR	DESCRIPTION	DATE	APPROVED
B	REDRAWN & ADDED TAPE NO.	3-4-69	FW
C	REVISED B-630	4-1-70	FCY
D	REVISED F-621	8-23-73	SM
E	REV 0720-0043-93	3-10-93	MJ



FOR .115 TO .170 WIRE INSULATION DIA.
TONGUE MATERIAL THK. = .031 #002

NOTE: 1. STAMPING MAY BE ON TOP OR BOTTOM.

100. WOOSE PC. BOX 18-36158-1			
1	36158 ON TAPE	2-36158-1	BODY & SLEEVE: COPPER (QQ-C-576) TIN PL (MIL-T-10727)
1	1 WIRE TERMINAL	36158	INSULATION: BLUE NYLON (MIL-M-20693) TYPE I
QTY.	DESCRIPTION	PART NO.	MATERIAL & FINISH
UNLESS OTHERWISE SPECIFIED DIMENSIONS ARE IN INCHES TOLERANCES ON: DECIMALS: ±.008 ANGLES: ±5°		CONTRACT NO.	AMP INCORPORATED HARRISBURG, PENNSYLVANIA
MATERIAL: SEE TABLE		DR. <i>Amey</i> 3-11-69 CHK. <i>Stu Walker</i> 3-11-69 APPD. <i>Swabell</i> 4-7-69 REL. <i>Am Ensign</i> 4/8/69	AMP NAME: WIRE TERMINAL P.I.D.G. RING TONGUE WIRE SIZE: 16-14
		OSGN APPD.	SIZE: A CODE IDENT. NO. 00779 NUMBER 36158
		OTHER APPD.	SCALE: NTS SHEET 1 OF 1